



EZ-PATH® FIRE STOPPING DEVICES

With EZ-Path®, we offer a solution for passive fire protection through walls and floors where electrical and data cables are to be installed.

EZ-Path® contains a swelling body that expands in case of fire and thus closes the passage. The product is also designed to protect against dust and cold flue gases.

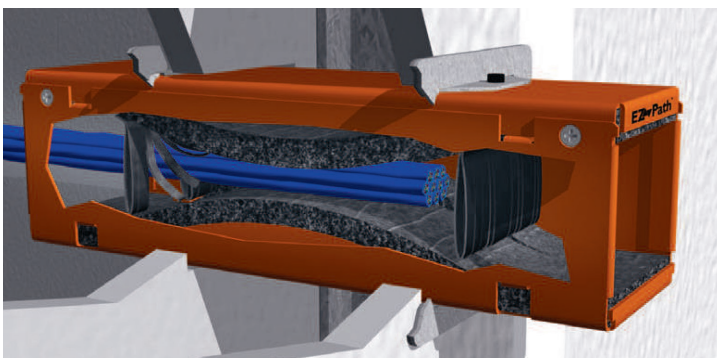
/ EZ-Path® can be used for electrical and data cables up to 80 mm in diameter.

/ The unit is fireproof with or without cables.

/ Available in various dimensions and configurations.

/ Cables can be added or removed without affecting fire or dust protection.

This product also meets the requirements for an approved fire protection throughout the construction period.



EZ-Path® is a registered trademark and is manufactured by Specified Technologies Inc

CHOOSING FIRE PROTECTION FOR ELECTRICAL AND CABLE INSTALLATIONS

The following wall types can be used for EZ-Path® fire stopping devices



Solid walls, beams

Of various types of stone, brick or concrete



Lightweight walls

Walls made of, for example, plaster



Sandwich element

Prefabricated elements consisting of steel sheets with an inner insulating core

CONTACT US FOR MORE INFO

info@firesafe.se / www.firesafe.se / 010 – 155 09 00

