

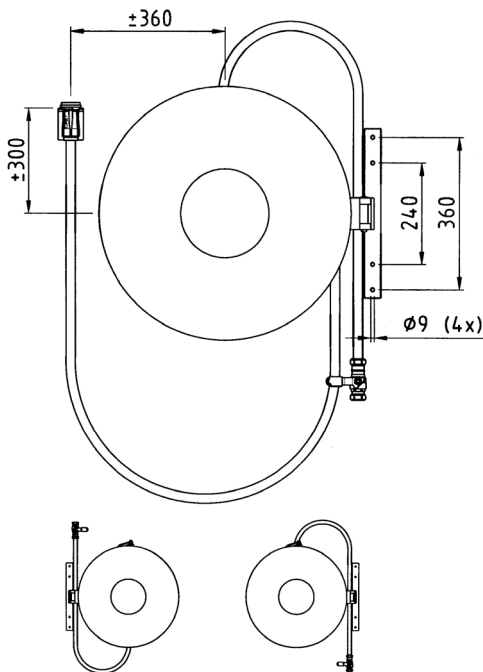
MOUNTING INSTRUCTION

Hose reels and installation kits

Swinging arm for wall mounting

The swinging arm can be used with both left and right action.

1. Fit the swinging arm onto the wall with 4 bolts, each 8 mm. thick.
2. Fit the feeding valve onto the water mains (the feeding valve does not apply in case of an automatic valve).
Position of the feeding valve:
When fed from the floor up: 80-100 cm. above the floor.
When fed from the ceiling down: 125-145 cm. above the floor. The flexible feeding hose should always be positioned on the hinge side of the swinging arm (view drawing).
3. Fit the grommet of the flexible feeding hose loosely onto the feeding valve. As a standard, the grommet of the swinging arm is installed in a way, that the reel is right-swinging when fed from above and left-swinging when fed from below. If necessary the grommet can be turned 180°.
4. Install (when desired) the nozzle bracket (view drawing).
5. Fasten the nuts of all clamping fittings tightly.
6. Please note! In case the hose reel swings out by itself, loosen the clamping fitting nut on top of the feeding valve. Apply torsion to the hose contrary to the swinging direction of the reel, resulting in a repositioning of the reel against the wall; next fasten the nut again tightly.



Wall swinging arm

Final assembly of hose reels with manual valve

1. Check the central shaft of the reel for contamination and remove possible dirt.
2. Place the complete reel gently onto the shaft and push it with a slight right-handed rotation.
Beware of harsh movements and tilting; this may cause damage to the shaft-seals which means leakage!
- 3a. In case of reel with synthetic core:
Place the washer onto the shaft and fit the self-sealing nut or bolt. Fasten the nut or bolt until the reel meets a slight resistance when turned.
- 3b. In case of reel with steel core:
Check whether the nylon bearing is placed in the core.
Next fit the self-sealing bolt. (a metal washer may be part of the delivery, please do not use this). Fasten the bolt until the reel meets a slight resistance when turned.
Beware: the self-sealing capacity of the bolt is lost when used several times. Such a bolt needs to be replaced.
4. Put the instruction plate in its place.

Final assembly of hose reels with automatic valve

Apart from everything mentioned above, the final assembly of a reel with an automatic valve calls for the following:

1. In connection with an automatic valve, only a special hose reel with a stainless steel stud (catch-lip) should be used.
The hose reel is fitted thus, that the catch-lip is positioned on the valve-side.
(The catch-lip opens the valve when the reel is turned; when fitted incorrectly or in case of the use of an unsuitable reel, the valve will stay closed!)
2. After the installation unroll the hose with minimal 1 turn of the reel. This will open the valve. Next rewind the hose by turning back the reel with minimal 1 turn. The valve is now closed.

Taking the hose reel into use

After installation the hose reel should be tested as follows:

1. Open nozzle.
2. Open the feeding valve partially and carefully de-aerate the hose until the nozzle gives water. (In case of an automatic valve: just turn the reel 1 rotation.)
3. Open the feeding valve completely (not applicable in case of an automatic valve.)
4. Spray for some time with the nozzle in the jet and spray position to check the water mains for contamination.
5. Close the feeding valve and nozzle firmly. (In case of an automatic valve: close the nozzle, then wind the hose by turning the reel. The reel should turn minimal 1 rotation to close the valve.)
6. Wind the hose and (if applicable) place the nozzle in its bracket. (In case of an automatic valve: check whether the valve is closed by opening the nozzle; the hose should be without pressure.)

Your hose reel is now ready for use.

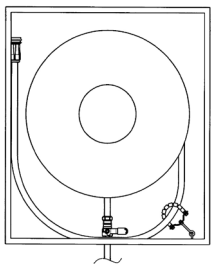
MOUNTING INSTRUCTION

Hose reels and installation kits

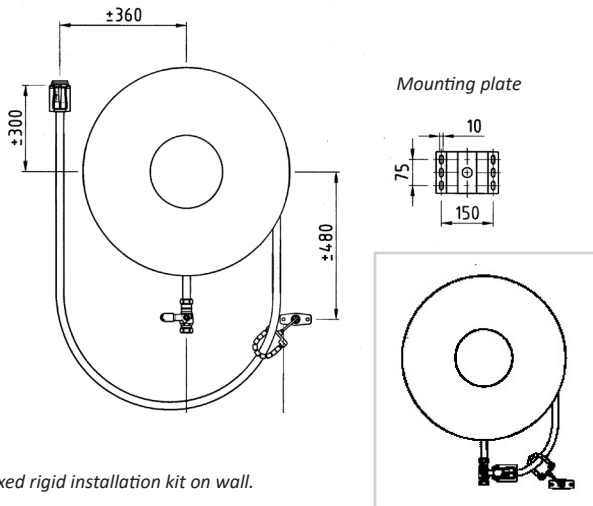
Fixed installation kit with rigid feed pipe with rigid feed pipe

The installation kit with rigid feed pipe is suitable for connection to the water mains from the floor up, as well as from the ceiling down. The installation kit is used for wall mounting or installation in hose reel cabinets with a height of over 800 mm. In all other cases an installation kit with flexible feeding hose or swinging arm is used.

1. Fit the feeding valve onto the water mains (the feeding valve does not apply in case of an automatic valve). Depending on the position of the feeding valve it may be necessary to reassemble the handle with a 180° turn.
Position of the feeding valve:
When fed from the floor up: 80-100 cm. above the floor.
When fed from the ceiling down: 125-145 cm. above the floor.
2. Fit the inlet pipe loosely onto the feeding valve and install the mounting plate with a minimum of 4 bolts, each 8 mm. thick, onto the wall or inside the cabinet.
3. Fasten the nuts of all clamping fittings tightly.
Install the hose guide and the nozzle bracket on their mounting points in the cabinet or on the wall as shown in the drawing.



Fixed rigid installation kit in cabinet or wall-recess.

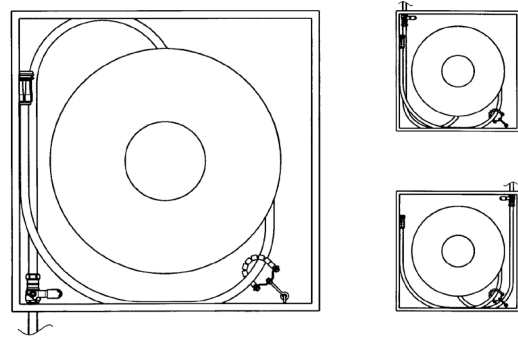


Fixed rigid installation kit on wall.

Fixed installation kit with flexible feeding hose

The installation kit with flexible feeding hose is suitable for connection to the water mains from the floor up, as well as from the ceiling down. The installation kit is used for installation in hose reel cabinets or wall-recesses with a height of less than 800 mm (installation with a rigid pipe is not possible).

1. Fit the feeding valve onto the water mains (the feeding valve does not apply in case of an automatic valve). Depending on the position of the feeding valve it may be necessary to reassemble the handle with a 180° turn.
2. Fit the grommet of the flexible feeding hose loosely onto the feeding valve and install the mounting plate with a minimum of 4 bolts, each 8 mm. thick, inside the cabinet or wall-recess.
3. Fasten the nuts of all clamping fittings tightly.
4. Install the hose guide and the nozzle bracket on their mounting points in the cabinet as shown in the drawing.

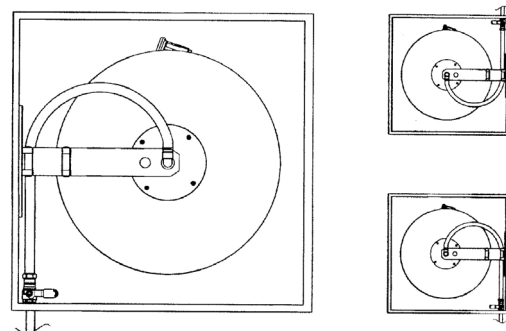


Flexible installation kit, 3 different positions of the feeding valve in the cabinet are possible.

Swinging arm for cabinet or wall-recess mounting

The swinging arm can be used with both left- and right action.

1. Fit the swinging arm inside the cabinet or wall-recess.
2. Open a knock-out hole for easy access of the water mains, on top or in the bottom of the cabinet, depending on its position. The water mains should enter the cabinet on the hinge-side of the swinging arm (view the drawing, water mains from the top-left is possible as well, but not shown).
3. Fit the feeding valve onto the water mains (the feeding valve does not apply in case of an automatic valve). Depending on the position of the feeding valve it may be necessary to reassemble the handle with a 180° turn.
4. Fit the grommet of the flexible feeding hose loosely onto the feeding valve. As a standard, the grommet of the swinging arm is installed in a way, that the reel is right-swinging when fed from above and left-swinging when fed from below. If necessary the grommet can be turned 180°.
5. Fasten the nuts of all clamping fittings tightly.



Swinging installation kit fitted in cabinet